

Redbridge Local Safeguarding Children Board (LSCB)

SPRING NEWSLETTER 2016

Message from John Goldup, Independent Chair

Welcome to the Spring Edition of the Redbridge LSCB Newsletter. I am writing this message just after the latest meeting of the Board on 26 April, so it's good to have an opportunity to update you on some of the key developments since the Winter Edition of the newsletter was published earlier in the year.

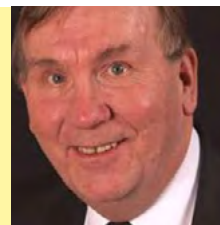
At the meeting, the Board endorsed a revised version of the Thresholds Document, setting out how anybody working with children who is worried about a child can access help, and what the thresholds are for a referral to social care. The revised document doesn't fundamentally change where the thresholds are set, although it does aim to give some clearer guidance around potential referrals of young people at risk of sexual exploitation or of radicalisation, and some particular triggers of concern for children with disabilities. It is intended however to be more user friendly and accessible than perhaps previous versions have been, so that it can become a real reference point for workers in every setting who may be worried about a child but not quite sure what to do or where to go. We do want to 'road test' the draft with a wider group of front line professionals

before finalising it, but it should be ready to publish in the next few weeks and we will launch it as widely as we can.

We also agreed the LSCB Business Plan for 2016/17, setting out our priority actions for the year (see [page 2](#)). We considered a broadly very positive report on levels of attendance and participation in child protection case conferences, which demonstrated strong commitment from partner agencies and a very encouraging increase in the number of young people attending their conferences. We received a progress report on the implementation of the pan-borough strategy on female genital mutilation. It is clear that much good work is going on, but also that it does need to be better co-ordinated on a partnership basis, and this is something we will be addressing over the next period.

We have been fortunate in securing resources from partner agencies to expand the LSCB Team, to assist the LSCB in delivering on its very wide ranging responsibilities, and over recent weeks we have been joined by a number of new members of staff. Pradip Panchmatia has joined us as interim LSCB Quality Assurance Manager, and will be concentrating on driving forward a robust multi-agency audit programme. Amanda Jones, who you may well know from her previous role as Teenage Pregnancy Coordinator, has been appointed to the role of LSCB Training Manager. Amanda will be moving forward the LSCB Training Programme for 2016-2017 and also working with partner agencies in relation to quality assuring training and reviewing the impact of safeguarding training. Sindi Tepzda has joined us as a Business Admin Apprentice.

Finally, Lesley Perry has been appointed to the permanent post of LSCB Business Manager, following a period of secondment to the role.



Since the last newsletter, through the 'Meet the Chair' events, I have met with around 60 front line staff from across partner agencies to talk about the LSCB's work and to hear their views about how safeguarding in Redbridge can be strengthened. These have been really lively and enjoyable events and we are holding another one on 15 June - see the Events Calendar on [page 6](#). An equally lively and enjoyable event was our conference with young people on 26 April, where we heard directly about what the key issues are for them about being and feeling safe in Redbridge and how adult professionals could do more to support them with those issues. There's a report of the conference on [page 7](#).

Finally, I'd like to remind everybody that the LSCB has a Resolution and Escalation Policy which any professional can use to address issues of professional disagreement or concern on any safeguarding issue. It's on the [LSCB website](#) but I'm not sure yet how widely aware people are of it. Do have a look and don't hesitate to use it if you feel it's necessary. It's much better to take active steps to resolve professional disagreements - which will always arise in an area as sensitive and complex as safeguarding - than to let them go unaddressed and potentially for a child to suffer.

Best wishes
John

THIS ISSUE

Page No

LSCB Priorities 2

Priority Updates 3-4

Service Highlight 5
NELFT Safeguarding
Children Duty Desk

LSCB Events Calendar 6

LSCB Conference 7

**Multi-Agency
Learning Event** 8

Contact Information 9

Priorities

The LSCB finalised its **Business Plan for 2016 – 2017** at the April Board meeting. The priorities have been agreed as follows:

Priority 1

To improve the protection and support of children who are sexually exploited, and to strengthen our work in identifying, disrupting and prosecuting child sexual exploitation (CSE).

Priority 2

To improve the protection and support of children living with domestic violence, substance abuse, and adult mental health, or at risk of female genital mutilation (FGM).

Priority 3

To improve the protection of young people from involvement with violent extremism.

Priority 4

To strengthen the safeguarding of children with disabilities, and to reduce the incidence of disability by increasing awareness of the risks of consanguineous relationships.

Priority 5

To strengthen our work in preventing, identifying and protecting children from neglect.

Priority 6

To increase the effectiveness of the LSCB in co-ordinating and ensuring the effectiveness of work of all agencies to safeguard and promote the welfare of children and young people.

Priority Updates

Priority 1

Child Sexual Exploitation

It was National Child Sexual Exploitation (CSE) Awareness Day on 18 March. The LSCB supported the campaign on Twitter #helpinghands and by joining in by making personal pledges to show support.



For information on CSE, including links to resources for professionals, please view the LSCB website. Barnardo's have published a series of Spot the signs leaflets for professionals, parents and carers and young people which can be downloaded free of charge from their website. If your agency or team would like a short briefing on CSE, please contact LSCB.Training@redbridge.gov.uk

Priority 2

Children living with domestic violence, substance abuse and adult mental health, or FGM

North East London Foundation Trust (NELFT) facilitated a learning event entitled "Empowering Families" for professionals across all agencies on the 'toxic trio'. See report of event on page 8. To receive copies of the resource from this event please contact the **LSCB Business Manager**.

The Home Office, with Virtual College, have made available a free elearning module on recognising and preventing Female Genital Mutilation (FGM). Sign up here to complete the **module** and read the Redbridge FGM Factsheet to ensure you understand this safeguarding issue and comply with the Mandatory Duty to report known cases of FGM carried out on a child under the age of 18 to the police.

Local health and social care agencies have collaborated to develop a **FGM Strategy**. The Government have recently published **Multi Agency Statutory Guidance on FGM**.

Professionals are encouraged to access the resources available via the National FGM Centre '**Knowledge Hub**'.

Priority 3

Radicalisation

CHANNEL: Supporting vulnerable individuals

Like child protection, Channel is a multi-agency safeguarding programme run in every local authority in England and Wales. It works to support vulnerable people from being drawn into terrorism and provides a range of support such as mentoring, counselling, assistance with employment etc. Channel is about early intervention to protect vulnerable people from being drawn into committing terrorist-related activity and addresses all types of extremism. Participation in Channel is voluntary. It is up to an individual, or their parents for children aged 17 and under, to decide whether to take up the support it offers. Channel does not lead to a criminal record.

Referrals are received from appropriate agencies (schools, health etc.) in the same manner as other safeguarding issues. If you require further information please contact the Prevent Team on by e-mail rscp@redbridge.gov.uk. The team will deliver training (Workshop to Raise Awareness of Prevent) to any organisation who requests it and this is free of charge. This training enables bodies such as schools, health etc. to meet the statutory requirement of the Prevent Duty. Contact the Prevent Co-ordinator via 020 8708 5971.

If there is risk of immediate harm or danger then you should contact the police via 999 or the Police Anti-Terrorist Hotline (0800 789 321).



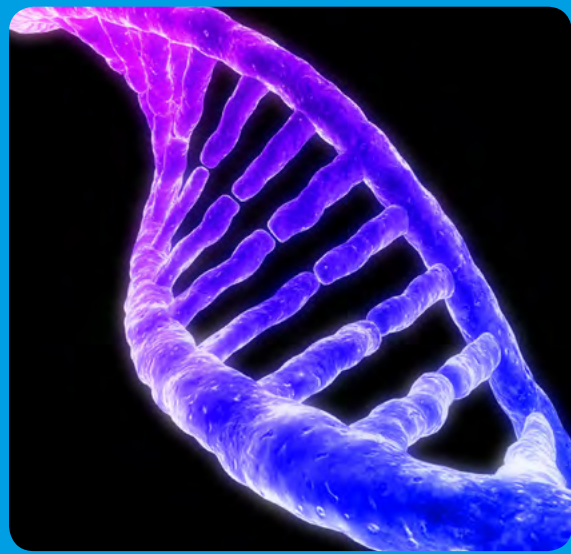
Priority Updates

Priority 4

Children with Disabilities and Consanguinity

The LSCB has published a useful leaflet for the public on children's health and parents related by blood. The content covers the genetic risks around first cousin marriage which can result in birth disorders. Please do share the leaflet with families that you feel may find it useful. For further information, contact our CDOP Co-ordinator on 020 8708 5961.

The LSCB Multi-Agency Audit Working Group are currently undertaking a **multi-agency audit** themed relating to children with disabilities cases. A summary report on findings and recommendations/lessons learnt will be presented to the LSCB in July.



Priority 5

Neglect

One area of work that the LSCB will be developing over the coming year is neglect. Following publication of the **LSCB Multi-Agency Neglect Strategy** last year, the next step is to take forward the Delivery Plan, particularly around rolling out the Neglect Toolkit and Guidance to ensure a consistent approach to identification. If you would like support in implementing the **Toolkit**, please contact **LSCB@redbridge.gov.uk**.



Did you know?

Over 24,300 children were identified as needing protection from neglect in 2015 and neglect is the most common reason for taking child protection action (**NSPCC**).

Priority 6

Developing the effectiveness of the LSCB

The LSCB have been undertaking a timely review of the Threshold Document. If you wish to be involved and provide comments on the revised draft, please e-mail **LSCB@redbridge.gov.uk**.

Having appropriate and consistently applied thresholds are vital to ensuring the most appropriate use of services and ensuring that children, young people and their families or carers receive the right support from the right professional or agency at the right time. An accessible Threshold Document will enable all professionals to understand what services are available locally, how to gain access to them, who to contact in what circumstances and when to make a referral to children's social care. The LSCB will be ensuring that the revised document is fit for purpose by consulting with front line practitioners.



Best care by the best people



NELFT Safeguarding Children Duty Desk

NELFT Safeguarding Children Team is predominately an advice and guidance service available to all Trust staff. In order to further support practitioners, the Duty Desk was established in July 2015 and is the central 'hub' into which all safeguarding enquiries from Trust staff or relating to NELFT service users/patients are received. The purpose of the service is to provide advice, support and guidance to NELFT staff in relation to safeguarding concerns across the Trust. The Duty Desk assists operational teams in escalating concerns to the local authority and other agencies as appropriate.



Since the Duty Desk was established, over 900 telephone calls have been received and 100 emails responded to. The Safeguarding Children Team also responds to all Datix reports (NELFT incident reporting system) where there is a safeguarding children issue highlighted. The top four enquiry trends currently are: domestic abuse, neglect, parental mental health and physical abuse. Historical abuse also features highly, echoing recent high profile media cases but also NELFTs role as a provider of mental health services. Activity is reported quarterly to leadership teams to inform them of trends and developments.

In order to support the 'Think Family' agenda, the Safeguarding Children and Adult Duty Desk Advisors are co-located. This arrangement allows ease of access to advice across the service, facilitating discussion around joint concerns and ensuring a timely response.

In March 2016, a survey of practitioner experience of the Duty Desk was launched. This will be reported on later in the summer. However, the responses received to date are overwhelmingly positive and comments about the service have been encouraging across all NELFT directorates. The Duty Desk has been evaluated anecdotally as a helpful addition to the safeguarding service through improving accessibility of advice for staff to enable them to safeguard and promote the welfare of children and young people. NELFT staff can contact the Duty Desk via 0300 555 1201 Ext: 65022 or nem-tr.nelftsafeguardingchildren@nhs.net.

Kate Byrne

Named Nurse Safeguarding Manager, NELFT

LSCB Events Calendar

To keep fully informed about LSCB events, do follow us on  @RedbridgeLSCB

'Meet the Chair' Events

We are concluding our successful current series of 'Meet the Chair' events with a final date on

**15 June 2016 from 2pm-4pm
at Hainault Health Centre, Chigwell**

Places can be booked via LSCB@redbridge.gov.uk or calling 020 8708 5282. If you haven't attended yet, please do come along and find out more about the work of the LSCB and also share your views on how we can work together to safeguard children and young people in Redbridge.

Training

The LSCB Training Programme 2016 – 2017 is being finalised. Courses that will feature include:

- Safeguarding Children Level 2
- Safeguarding Children at Risk of Neglect
- CSE Training for Practitioners
- Safeguarding Children with Disabilities
- Working with Families with Multiple Needs ('Toxic Trio')
- Abuse in Teenage Relationships
- Safeguarding Children in a Digital World and Cyberbullying

We will also be continuing with regular briefings and workshops on:

- Learning from Individual Cases: Child Deaths
- Learning from Individual Cases: Multi-Agency Audits
- Introduction to CSE
- WRAP (Introduction to Prevent) Workshop
- Common Assessment Framework (CAF): Assessment and Planning for Practitioners Workshop
- Safeguarding Children and Young People from the Practice of Female Genital Mutilation (FGM)

Please see [website](#) for full Training Programme Information.

Department for Education (DfE) Public Awareness Campaign

The LSCB are supporting the DfE nationwide communications campaign, running from March to September 2016, which encourages members of the public to report child abuse. You may have seen posters, website banners etc. or seen the campaign information on Redbridge i. The key message is – together, we can tackle child abuse! Everyone has a role to play in protecting children and young people from child abuse and neglect. All children have the right to safe and should be protected from all forms of abuse. Unfortunately, research tells us that a third of all people who suspect child abuse do nothing. This could be because they are worried that they may be wrong or that simply by raising your concerns, a child could be taken from their parents. You do not need to be absolutely certain about whether a child is being abused. If you have a feeling that something isn't right, report it to the professionals who can make further enquiries and undertake a full investigation. To spot the signs of child abuse or neglect consider any changes in ABC – Appearance; Behaviour; and Communication that a child or young person may be exhibiting. Your information may be part of a bigger picture. In 2014 – 2015, more than 400,000 children in England were provided with support because someone noticed they needed help. Do support the campaign by signposting to Report Child Abuse. Specific concerns about children or young people in Redbridge should be reported direct to the **Child Protection and Assessment Team (CPAT)** via 020 8708 3885 (see Contact Information on page 7).



The 'Voice of the Child or Young Person' in Safeguarding



On 26 April, over 75 professionals and 35 young people came together for our conference which looked at some of the real issues for children and young people in relation to staying and feeling safe. The Programme featured a welcome from our Independent Chair, John Goldup, followed by a presentation on what we mean by the 'voice of the child' and its importance by Lesley Perry, our LSCB Business Manager and Jenny Norwood, a Senior Manager from the LBR Youth Service. Jan Edwards, the Children's Services Children's Rights Advocate, spoke about the importance of recording the 'voice of the child'.

The most important part of the event was led by the LSCB Youth Forum, who screened a film that they had made called "In Your Face, In Your Space". The film featured young people discussing sexual harassment. After the film, the young people led table top discussions on the scenarios in the film, considering how professionals would respond and what they could do differently.

Then came a presentation by Robert Lamb, Project Director, Redbridge Autism Ambassadors. Robert shared safeguarding issues for children and young people with autism and gave some practical tips on how professionals could help.

We concluded the event with a plenary discussion, with a Panel (right), on what the young people felt that the LSCB, agencies working with children and young people in the Borough, and individual professionals could do to support young people with issues around sexual relationships, and

inappropriate behaviour. The messages came out loud and clear – give young people time and space to talk safely to an adult they can trust about sexual issues that concern them, set clear boundaries about what is and isn't appropriate and uphold them to protect young people from sexual harassment, and do give out clear and consistent information that will enable young people to safeguard themselves.

On behalf of the LSCB, a big thank you goes out to all the young people that took part. The post-event feedback from professionals has been full of praise for the way in which the young people presented, spoke passionately and really helped professionals understand. The LSCB will be considering the feedback and looking at ways in which they can share the messages across Redbridge.

A brief review of the Conference, written by two of the young people, has been published in the **Iford Recorder**, 28 April, on page 10.

[Lesley Perry](#)
LSCB Business Manager



Multi-Agency Learning Event

Empowering Families

A multi-agency learning event, organised by NEFLT, took place on working with families with multiple needs (the 'Toxic Trio') on 18 April. The event was rated overall as 'excellent' by over 85% of the 76 delegates.

Speakers on the topics of domestic violence, drug and alcohol misuse and mental illness provided examples of effective multi-agency interventions but acknowledged that there are still gaps in embedding the lessons learnt from serious case reviews involving these safeguarding risks to children. The plenary sessions produced some great ideas for individual and collective responsibility for improving safeguarding responses.

The event highlighted the importance of the 'think family' approach when safeguarding children. The plenary sessions also discussed some of the complexities and challenges that are linked to supporting families with complex needs and encouraged everyone to continue to make a difference.

A representative from the Metropolitan Police Safeguarding Unit based in Redbridge said

"despite significant improvement in responding to domestic violence over the last 10 years, the problem remains hidden and people are still ashamed to admit that they might have mental illness or experience abuse in the home."

Jen Sarsby, Lead for Domestic Abuse, Harmful Practices, CSE and LAC, NEFLT

All agencies represented at the event were urged to embed the learning points from serious case reviews more effectively into safeguarding training, encouraging practitioners to find and then focus on the voice of the child. This strengthens their resilience through early intervention to give them the best chance of being happy and safe.



Learning from the event including an understanding that the role and function of MARAC needed to be made clearer to all front line staff. We also need to improve the quality of domestic violence risk assessment and greater awareness about the issue.

We heard that the referral rate to the Multi-Agency Safeguarding Hub (MASH) had increased by nearly 40% over the last year and that staff had to work hard to meet the challenge to ensure that every family at risk receive safe and effective safeguarding response.

Nita Madhani, NEFLT Assistant Director (Children) summarised the day in her closing remarks by reminding us to:

- **ASK THE QUESTION!!** be professionally curious and ask the questions encourage families to open up to us.
- **share the information!!** Don't let the important pieces of the jigsaw slip away.
- continue to strengthen our systemic approaches as multi agency partnership whilst working in a 'child centred' way
- continue to seek and hear the 'voice of the child'

Jen Sarsby, Lead for Domestic Abuse, Harmful Practices, CSE and LAC, NEFLT

Contact Information

Local Safeguarding Children Board (LSCB)

LSCB@redbridge.gov.uk

Tel: 020 8708 5282

Website: www.redbridgelscb.org.uk

[@RedbridgeLSCB](https://twitter.com/RedbridgeLSCB)

LSCB Training

LSCB.Training@redbridge.gov.uk

Local Authority Designated Officer (LADO)

LADO@redbridge.gov.uk

Tel: 020 8708 5350

Child Protection Referrals

Tel: 020 8708 3885 (Office Hours)

Tel: 020 8708 5897 (Evenings and weekends)

CPAT.Referrals@redbridge.gov.uk

Child Death Overview Panel (CDOP) Notifications

Nem-tr.CDOP@nhs.net



Your views count!

We want your views on safeguarding issues that are important to YOU. Articles should be 200 – 300 words in length. We also welcome feedback, comments and suggestions for future content. Please contact Lesley Perry, LSCB Business Manager, via LSCB@redbridge.gov.uk or on 020 8708 5282.