

## WINTER NEWSLETTER 2017

Ofsted's [report](#) on its inspection last autumn of children's services in Redbridge, and its review of the effectiveness of the LSCB, was finally published on 25 November 2016. Children's Services were judged to be good almost across the board – good overall, good for the effectiveness with which children are helped and protected, good for services and outcomes for children looked after, good for adoption performance, and good for leadership, management and governance. The 'front door' and MASH services were described as outstanding. Services for care leavers, although demonstrating "a number of areas of strong practice and a generally improving service", were assessed as still 'requiring improvement'.

This is a fantastic and well deserved report which places Redbridge in the top 25% or so of local authorities inspected so far under the current Ofsted framework – only 29 out of 115 inspected to date rated as 'good', with just two judged to be 'outstanding'.

It is also a tribute to the work of all partners – the report comments at several points on the strength of the partnership working which inspectors found in Redbridge. Child protection services in Redbridge were also judged to be 'good' in the most recent previous inspection, in 2012, and to have sustained and improved on this performance in the immensely difficult context of the last few years is a tremendous achievement.

| This issue                          | Page No. |
|-------------------------------------|----------|
| Board Report                        | 2        |
| Priorities Update                   | 3-4      |
| Service Highlight                   | 5        |
| LSCB Events Calendar                | 6        |
| Feature:                            |          |
| Safeguarding Learning & Development | 7        |
| Safety News                         | 8        |
| Meet the LADO                       | 9        |
| Contact Information                 | 10       |

I'm not going to attempt to summarise what is a very detailed [report](#), but I do recommend you read it in its entirety, if only to remind yourselves that in the midst of all the pressures and sometimes frustrations of your daily work, there is a real acknowledgement of the quality of what you do and achieve, and most importantly of the quality of service that the Borough's most vulnerable children receive.

I am pleased to report that the LSCB was also judged to be 'good', providing "effective and robust challenge to partner agencies in order that they provide sound, coordinated services for children, young people and families in Redbridge".

The Board held its quarterly meeting on 24 January and you will find on page 2 of this newsletter feedback on the issues discussed in what was a very packed agenda. One of the key decisions made was to agree the priorities for the LSCB's work in 2017/2018. The solid evidence of both the Ofsted report and its own work gives the Board confidence that safeguarding is now on a very strong and sound footing. Of course it is important that this performance is sustained, and the Board will continue to monitor that closely. However, we decided that in 2017/18 the Board should focus on areas of work where we know further improvement is needed, or where there is major organisational change the impact of which needs to be closely monitored. The priorities agreed for the Board's Business Plan in 2017/18, which will be brought to the April Board for approval, are:

To improve services for young people experiencing mental ill health.

To strengthen the protection and support of children and young people exposed to exploitation and harmful practices.

To strengthen the quality and impact of the IRO / case conference chair role, particularly with reference to cases of neglect.



To develop and implement a robust multi-agency action plan to substantially increase private fostering notifications.

To strengthen and improve support to children and young people on e-safety and peer on sexual harassment.

To further develop and improve safeguarding arrangements for children and young people who go missing from home or care.

To monitor and ensure the effectiveness of the arrangements for safeguarding children and young people in Redbridge in the new Metropolitan Police structure.

To further strengthen the LSCB's monitoring and oversight of front line practice.

Neither the LSCB nor any of its partner agencies have any intention of resting on the laurels of the Ofsted report!

Finally, welcome to two new members of the LSCB Team: Andrea Barrell as our permanent Quality Assurance Manager, and Rabiya Rehman, Business Admin Apprentice. Welcome also to Detective Superintendent John Ross, who under the new police structure will be responsible for the police's work in the Protection of Vulnerable People - including child protection and domestic violence work – across Redbridge, Barking and Dagenham, and Havering.

**Best wishes**

**John**

# Board Report

## Feedback from the LSCB Meeting – 24 January 2017

### Summary of items discussed by the Board:

- Discussed update report on the partnership's Violence against Women and Girls (VAWG) Integrated Support Service, which focused particularly on some of the work of the Young Person's Advocate with young women aged 14 to 17. The Board was pleased to learn that ongoing funding for the service for a further two years has been confirmed.
- Approved the LSCB Annual Report for 2015/16, publication of which had been delayed by the demands of the Ofsted inspection. The report confirms Ofsted's judgement on the overall strength of safeguarding work in Redbridge. It also highlights that, while referrals to social care fell slightly in the year in question, the volume of child protection activity (S47 inquiries, case conferences, number of children on plans) increased substantially. While this may reflect clear assessment of risk, we do need to ensure that families and children are not being drawn into the child protection unnecessarily 'to be on the safe side'
- Received its quarterly report on developments in our work with children who are or are at risk of sexual exploitation. The number of contacts raising concerns about CSE has fallen from 64 in the first quarter of 2016 to 29 in the most recent quarter. This requires further examination.
- Discussed a report on work with children missing from home or care and an analysis of the information collated from Return Home Interviews about why children go missing and what might help them change their behaviour. Despite a number of developments, the number of children who go missing still remains broadly unchanged from year to year. Reducing the number of missing episodes is one of the Board's priorities for 2017/18.
- Received a verbal update on the progress of the 'tri-borough' restructuring of the Metropolitan Police across Redbridge, Barking and Dagenham, and Havering, bringing all safeguarding work in the three boroughs under a single command. The Board welcomed the opportunities for streamlining and integration that this offered, but stressed the importance of very detailed consultation with the individual boroughs over implementation. It emphasised that Ofsted inspectors described joint work with the police in Redbridge as 'the best we've seen anywhere', and assessed the MASH as outstanding. It is absolutely critical to ensure that this gold standard is sustained through any police reorganisation.
- Discussed the learning arising from a recent audit of multi-agency work with children experiencing sexual exploitation. A key finding was that among the main contributors to improved outcomes for young people were the prompt sharing of information when concerns arose, not delayed by concerns about patient or client confidentiality, and the ready availability of specialist services when concerns are identified.
- Discussed a report on what was until recently an increasing rate of children becoming subject to repeat child protection plans. The report confirmed that there can be particular issues with neglect cases, with plans being ended without clear evidence of change, and then coming back into the system sometimes very quickly.
- Discussed a report from the Designated Officer concerning allegations against people working with children. The number of allegations which were assessed as meeting the threshold for formal consideration more than doubled in 2016, and almost 40% led to one of criminal investigation, conviction, disciplinary action, dismissal, or referral to the Disclosure Barring Service (DBS) or a regulatory body.
- Discussed a report from Barking, Redbridge and Havering Hospitals on their child safeguarding audit activity. Some of the audits found low compliance with some key processes – for example, completion of an injury flow chart for all children presenting with an injury. However, the Board was impressed with the rigour of the programme and the Trust's evident determination to address non-compliance and improve performance.
- Welcomed a report from its Training Sub Group setting out the progress made in developing a framework for evaluating the impact on practice of the LSCB training programme.

The Board also welcomed a number of new members, and in particular an increase in the number of school representatives which is really positive.

# Priority Updates

## Priority 1

### Child Sexual Exploitation

The LSCB conducted a second multi-agency audit on Child Sexual Exploitation (CSE) cases at the end of last year. Findings include:

- Not all young people being aware that they were subject to or at risk of CSE.
- Successful outcomes were much more likely if the intervention occurred at the right time for the young person and they were well engaged.
- Positive information sharing between agencies supported safeguarding.
- MASE Panel process was robust.
- Care Plans were not always SMART.
- Changes in Social Worker had a real impact on relationships building and trust.

Learning includes ensuring that all agencies are kept up to date with local procedures, timely referrals are made, engagement with the young person is fostered as early as possible and families to be kept up to date on decision making and delays within the Crown Prosecution Service.

To find out more about what the audits have told us, sign up to our Briefing on Learning from Multi-Agency Audits – CSE, which is due to take place on 23 May 2017 (PM).

## Priority 2

### Children living with domestic violence, substance abuse and adult mental health and female genital mutilation (FGM)

We have recently conducted a Multi-Agency Audit on cases that involve families with multiple needs who are impacted by domestic violence, substance abuse and adult mental health – sometimes referred to as the 'toxic trio'. A 'round table' event took place on 19 January 2017, with participants from 15 agencies working with children, young people and their families, including Families Together, Fusion, CAMHs and a local Children's Centre. A report of the findings will be presented to the LSCB Learning & Improvement Sub Group on 8 February 2017 for the Group to agree recommendations for the Board.

Congratulations to our partners Barnardo's on their [National FGM Centre](#), based in Barkingside, for winning the Safeguarding Award at the [Children and Young People Now Awards](#). The judges said that the Centre won the award as the "initiative that has made the biggest contribution to prevent and protect children and young people from abuse and neglect", with one judge saying the centre was "a prime example of multi-agency, ground breaking practice". The Centre's [Knowledge Hub](#) is open for interaction with practitioners that need information, advice and guidance on FGM.

## Priority 3

### Radicalisation

The Youth Leadership Programme (Redbridge Home Office funded Prevent project) is in full swing. The main aim of the Programme, which is now in its fifth round, is to lead young people away from the influences of violence, injustice, radicalisation and extremism and show them that they can be role models with their own communities. 35 students from years 10-12 were selected, out of 85 applicants from across ten Redbridge Secondary schools. They have completed five weekly sessions and will be attending a 3 day residential course at Warwick University in February.

We have recently established a Prevent Advisory Group. The group hopes to engage with Redbridge communities and gain a better understanding of Prevent and where possible shape delivery according to local needs. The group met in December and plans to meet again in February. Further representatives from community groups are welcome. Terms of Reference (ToR) are available from the [Prevent Co-ordinator](#).



**STOP**  
TERRORISTS'  
& EXTREMISTS'  
ONLINE PRESENCE

# Priority Updates

## Priority 4

### Children with Disabilities and Consanguinity

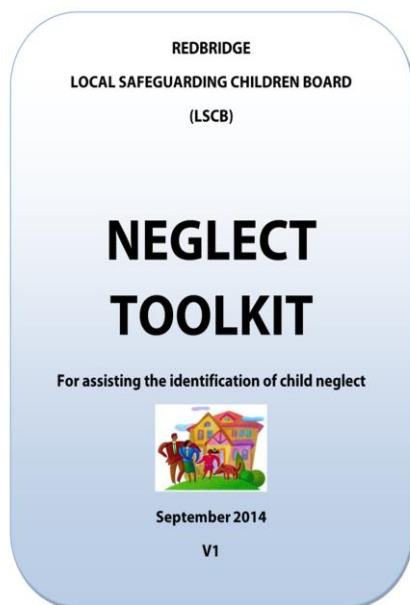
Our leaflet on first cousin marriage and genetic risk is now available in [Urdu](#). We have also published links to an [information film](#) on how recessive disorders can be inherited which is available in both English and Urdu. Practitioners may find this helpful when talking with service users.

## Priority 5

### Neglect

The final [Safeguarding Children and Young People from Neglect Training Course](#) on the 2016-2017 Training Programme is taking place on 14 March 2017.

Places are still available and you can sign up on-line [here](#). Don't forget to utilise the [Redbridge Neglect Toolkit](#), which will help with identifying neglect, when working with families.



## Priority 6

### Developing the effectiveness of the LSCB

The effectiveness of the LSCB was scrutinised recently by Ofsted who undertook a review of the Board as part of its [Single Inspection Framework \(SIF\)](#) in Redbridge. Both the LSCB, and Redbridge Children's Services, were graded as 'good'. The report includes very positive comments on the LSCB such as:

"The board is committed to ensuring that safeguarding is a priority for all partner agencies and that the board has a way of measuring this."

"Engagement and commitment of partners to the work of the board are very strong."

"An impressive range of partner representation helpfully includes a broad span of voluntary agencies"

"Involvement, inclusion and partnership working to capture children's voices are clear strengths within the board"

"Reviews of cases are thorough, and there is evidence of challenge analyses to agencies, and effective and appropriate information sharing."

"The board's excellent website is interactive and informative, with up-to-date information for professionals, children and young people and parents."

All Board partners should be extremely proud of the work that has been undertaken in making the Board so effective in undertaking its role in safeguarding children. Well done and thank you!





# Service Highlight: Redbridge Children and Young People's Network (RCYPN)

The LSCB has a number of different partner agencies from the voluntary and community sector. There are also members from their 'umbrella organisation' – the Redbridge Children and Young People's Network (RCYPN) on both the Board and our Learning & Improvement Sub Group.



REDBRIDGE CHILDREN & YOUNG PEOPLE'S NETWORK

The Network plays a vital role in the sector with its vision *"for all children and young people in Redbridge to develop to their full potential in a child and young person friendly borough by enjoying good health, quality safe play, learning opportunities and support for their development"*.

The vision is taken forward by providing a forum to work with partners to raise awareness of what is involved in making Redbridge 'child friendly' and how this can be achieved. The Network links with a wide range of stakeholders to shape services ensuring they reflect the needs and interests of children and young people living in the Borough.

The RCYPN aims to support all voluntary and community groups working in Redbridge with children & young people aged 0-25. With a membership of around 300 groups from this sector alone, including national charities as well as small unfunded ones, the Network has many contacts! It also has members from the statutory sector including the London Borough of Redbridge, health providers and, of course, the LSCB!

The Network held their Annual General Meeting (AGM) on 16 November, which was addressed by a number of guest speakers including Cllr Gurdial Bhamra, The Worshipful The Mayor of Redbridge, Andy Donald, Chief Executive of the LB Redbridge, Adrian Loades, Corporate Director of People, LB Redbridge, Councillor Bob Littlewood, Cabinet Member for Employment, Skills and Fairness and Ross Diamond, Chief Officer of the RedbridgeCVS. The AGM also provided an occasion to launch the **Network's Annual Report 2015-2016** – "Celebrating the voluntary sector in Redbridge" (see photo right – cake).



The Network holds regular [Network Meetings](#) to which guest speakers from both the voluntary and statutory sectors are invited. This provides an opportunity for groups to come and share information about their service and learn about consultations, meetings and events being organised by different sectors working with children, young people and their families or carers.

It wouldn't be right to end an introduction to this great organisation without mentioning how it actually delivers such good work. All of its achievements are down to a dedicated team of Trustees, and a group of willing volunteers, led by the Network Coordinator (see photo left).

For more details of the work of the Network and to get involved, view their [website](#) and 'like' their page on [Facebook](#). You can make contact via [rcypn1@gmail.com](mailto:rcypn1@gmail.com) or by calling 020 8514 4420.

# LSCB Events Calendar

To keep fully informed about LSCB events, do follow us on



## Safer Internet Day – 7 February 2017

The LSCB will have a stand in the Ilford Exchange Shopping Mall on Safer Internet Day, 7 February, providing information, guidance and resources on safe internet use. Do come and have a chat to the Team!



## National Child Sexual Exploitation (CSE) Awareness Day – 18 March 2017



The LSCB are taking part in various awareness raising activities on 17 March when the theme is 'unite against child sexual exploitation' and you can show your support by joining the [Helping Hands campaign](#) #HelpingHands

## Training

The LSCB Training Programme 2016 – 2017 includes the following learning events:

- Safeguarding Children Level 2
- Safeguarding Children at Risk of Neglect
- CSE Training for Practitioners
- Safeguarding Children with Disabilities
- Working with Families with Multiple Needs ('Toxic Trio')
- Cousin Marriage Awareness (Consanguinity)

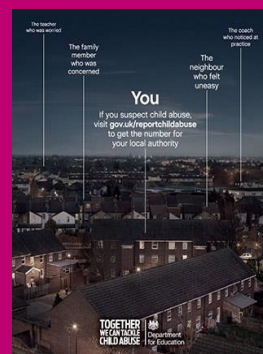
We will also be continuing with regular briefings and workshops on:

- Learning from Individual Cases: Child Deaths
- Learning from Individual Cases: Multi-Agency Audits
- Introduction to CSE
- WRAP (Introduction to Prevent) Workshop
- Common Assessment Framework (CAF): Assessment and Planning for Practitioners
- Safeguarding Children and Young People from the Practice of Female Genital Mutilation (FGM)
- Safeguarding Children and Young People who go Missing

Please see [website](#) for full Training Programme Information.

## Department for Education (DfE) Public Awareness Campaign

The LSCB supported Phase One of the DfE nationwide communications campaign, which ran from March to September 2016, encouraging members of the public to report child abuse. The outcomes of the campaign include evidence that it gave the public a sense of confidence to report suspicions, of those that reported to have seen the campaign, 41% took some action, and 72% said they were now more likely to report a concern around abuse or neglect. More details of the outcomes and headline messages to date from the campaign can be found on the [LSCB website](#). Phase Two is due to start in February 2017 and again the LSCB will be taking part. Find out more in the next edition of the newsletter.



Concerns about children or young people in Redbridge should be reported direct to the [Child Protection and Assessment Team \(CPAT\)](#) via 020 8708 3885 (see Contact Information on page 10).



# Feature: Safeguarding – Learning & Development

The LSCB offer a number of different learning and development opportunities, mainly via our [Multi-Agency Training Programme](#), but also through learning experiences as part of our [Job Shadowing Scheme](#).

Our current Programme features a wide range of training courses that share good safeguarding practice and promote the welfare of children and young people. Topics include Neglect, Missing, CSE, Safeguarding Children with Disabilities, and Families with Multiple Needs. They are all delivered to multi-agency audiences so that encapsulated within the learning is an understanding of the different roles and responsibilities of each professional and agency working with children, young people and families and to strengthen working together.

An information flyer is available on our [website](#) on each of our courses, briefings and workshops. The flyer provides general information about the learning event, the target audience and what the learning outcomes are. These are circulated to a wide audience across education, health, social care, and the voluntary and community sector. If you don't currently receive flyers regularly, you can opt into our Mailing List by completing the on-line [Contact Form](#). When considering booking a place on a course, do discuss with your Line Manager and consider the learning outcomes so that you can be sure it is the right course for you.

One of the areas that we are developing in the coming year is our understanding of the impact of the training that is delivered as part of our Programme. We have already agreed a [Framework and Principles for Safeguarding Children](#) which outlines how we will quality assure and evaluate the impact of training. We do recommend this approach to partner agencies for use with their own single-agency safeguarding training.

If you attend a briefing, workshop or training course, you will be asked to provide immediate feedback via a 'happy form' just asking for your initial satisfaction level on the learning event. Post-training you will be e-mailed the link to a full Evaluation Form and in return for completing this you will be sent an e-certificate of attendance, which can be used as part of your CPD portfolio. We will then follow up a percentage of attendees and their line managers two to three months after the event to make enquiries as to how the learning has been shared and implemented – and fundamentally, to ensure that it has made a difference to safeguarding practice and improved the services to children and young people. Please do engage with this process otherwise it is difficult to know whether the LSCB is using its resources wisely in relation to delivering effective training. All the information you share with us will be anonymised.

All our learning events are quality assured through independent observations, feedback from training providers and monitoring of the evaluation forms but the real test of effectiveness is whether attendees go on to use their new knowledge and skills to safeguard children and we can only know about that if you tell us!

From recent feedback, we understand that the learning from courses has resulted in a number of positive outcomes including development of more robust safeguarding policies, greater confidence in reporting safeguarding concerns and challenging professional practice, improved working together and networking across agencies. Below are some direct quotes that attendees have made about LSCB training:

*"I have created a display board in the office with information on about CSE to raise awareness amongst staff."*

*"I have refocussed on the issues of abusive relationships and made it an item to discuss when undertaking health assessments."*

*"I am now much more aware of the issues relating to gangs and feel able to raise this with young people."*

*"I feel that I am much better able to identify neglect within my practice."*

In addition to endeavouring to have a positive impact on attendees practice, as part of our learning events we also provide the resources for sharing the learning through training transfer to a wider audience and have received feedback which has confirmed that key learning has been shared at Team Meetings, presentations to provider forums, and in supervisions and one-to-one meetings. Research tells us that one best ways of embedding our own learning is to share our knowledge with someone else. If you are interested in the concept of training transfer, do look at the information on our [website](#).

As well as face-to-face training, there are a number of free learning modules available on specific safeguarding issues such as CSE, Female Genital Mutilation (FGM), Forced Marriage, and Child Trafficking - see our [elearning page](#).

During the next couple of months we shall be finalising our Training Programme for 2017 – 2018, based on the training needs analysis exercise undertaken last autumn and focused on the priorities agreed in the new Business Plan. New courses will include young people's mental health, self-harm, and safer recruitment amongst others. Look out for the newly published programme in April on our [website](#).

**Kate Byrne**  
Chair

**Amanda Jones**  
LSCB Training Manager

**LSCB Training Sub Group**  
[LSCB.Training@redbridge.gov.uk](mailto:LSCB.Training@redbridge.gov.uk)



# Safety News

## Safety Alert – Baby cribs with fold down sides

You may have read the media reports following the inquest into the tragic death of a seven-week old baby girl in Sussex in April 2015. The death has been attributed to asphyxiation following the baby becoming stuck after moving her head over the **fold down side** of her Bednest crib during sleep. The following safety advice has been issued since this tragic death: **Immediately STOP using Bednest cribs with folding panels that can be left in the half raised position. Fit the simple modification available in kit form to remove this risk. See the [Bednest website](#) for further details and to obtain a modification kit if required.**

Do share this information with families that you work with that may have this type of crib or one similar.

Read more about safe sleeping for babies on the [LSCB website](#) or contact the Lullaby Trust for further information via [info@lullabytrust.org.uk](mailto:info@lullabytrust.org.uk). The LSCB will be promoting [Safer Sleep Week](#) from 13 – 19 March 2017.



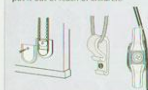
**Blind Cord Safety – check old blinds to ensure they are safe – see below and check out further safety information on the [ROSPA website](#).**

## Blind Cord Safety

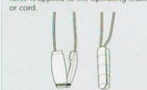
You can take a number of practical and simple precautions to significantly reduce the risk.

By securing looped cords or chains with one of the many safety devices available.

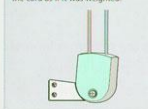
**Tie-back or cleat**  
This can be attached to an adjacent wall with cords wrapped around it to put it out of reach of children.



**Chain-break connector or safety tassel**  
These will break apart when excessive force is applied to the operating chain or cord.



**Spring cord tensioner**  
Attached to the window recess. The cord is fed through a pulley which tensions the cord as if it was weighted.



**Tassel**  
Cords and chains can be supplied with toggles attached to each end.



Blind cords and chains can pose a risk for babies, children and vulnerable people who could injure or even strangle themselves on the hanging looped cords.



Make sure all cords are out of reach.



Do not place your child's cot, bed, highchair or playpen near to a window blind.



Do not put sofas, chairs, table, shelves or bookcases near to a window blind, as children love to climb.

make it safe

"Persons in charge of children are ultimately responsible for following the safety instructions provided by the manufacturer." CEN Standard

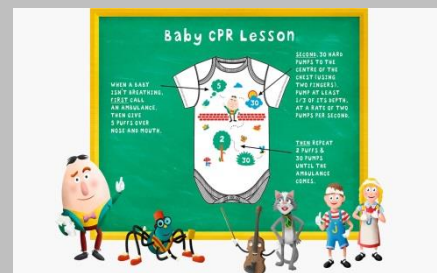
### make it safe

By always consulting a British Blind and Shutter Association member. Each one is committed to the BBSA's "make it safe" code.

They will give you the best possible advice on the most appropriate choice of blind and the ways to make it safer. You will also be able to find out about blind options that are designed to operate without hanging cords, such as water or motor operated. Find your local member by visiting [www.bbsa.org.uk](http://www.bbsa.org.uk)

## Baby CPR – Learn how!

Last year, [St John Ambulance](#) research found that only one in four parents would know what to do if their baby stopped breathing. To help as many parents as possible, St John Ambulance has simple produced guidance on baby CPR. You can see the vital steps in the image above, or [watch this video to find out how to do it](#).



**Sepsis Alert – Spot the Signs** – see below and further information in the [NHS leaflet](#). There is a small supply available from the [LSCB](#) of the cards and leaflets.

## WHAT IS 'SEPSIS'?

Also known as septicaemia or blood poisoning, sepsis is when your body's response to an infection goes wrong and begins to injure its own tissues and organs.

► It affects over 10,000 children every year in the UK.

## HOW DO I SPOT IT?

Sepsis could happen as the result of any infection.

There is no one sign for sepsis.

If your child is unwell with either a fever or very low temperature (or has had a fever in the last 24h).

► Think sepsis.



## ANY CHILD WHO:

1. Is breathing very fast
2. Has a 'fit' or convulsion
3. Looks mottled, bluish, or pale
4. Has a rash that does not fade when you press it
5. Is very lethargic or difficult to wake
6. Feels abnormally cold to touch

## MIGHT HAVE SEPSIS

Call 999 and ask: could it be sepsis?

The UK Sepsis Trust registered charity number (England & Wales) 16884

## ANY CHILD UNDER 5 WHO:

1. Is not feeding
2. Is vomiting repeatedly
3. Hasn't had a wee or wet nappy for 12 hours

## MIGHT HAVE SEPSIS

If you're worried they're deteriorating call 111 or see your GP

## JUST ASK "COULD IT BE SEPSIS?"

IT'S A SIMPLE QUESTION, BUT IT COULD SAVE A LIFE.

## ANY CHILD WHO:

1. Is breathing very fast.
2. Has a 'fit' or convulsion.
3. Looks mottled, bluish, or pale.
4. Has a rash that does not fade when you press it.
5. Is very lethargic or difficult to wake.
6. Feels abnormally cold to touch.

► Might have sepsis.

## ANY CHILD UNDER 5 WHO:

1. Is not feeding.
2. Is vomiting repeatedly.
3. Hasn't had a wee or wet nappy for 12 hours.

► Might have sepsis.

One or more of these?

Call 999 and say you're worried about sepsis.

If you're worried they're deteriorating call 111 or see your GP.



# Meet the LADO

## What is a Local Authority Designated Officer (LADO)?

The Designated Officer (or LADO) is appointed by the Local Authority to oversee allegations relating to safeguarding children and young people that are made against staff or volunteers working with them.

## What is the process?

Any allegation made against a member of staff or volunteer should be reported at once to the designated safeguarding lead within the organisation. The LADO should be contacted within one working day of the allegation being made by telephone, on 020 8708 5350 in order to discuss the concerns. Referrals should then be made direct to [Lado@redbridge.gov.uk](mailto:Lado@redbridge.gov.uk) by completion of the [LADO Referral Form \(27.2KB\)](#).

## Who is the LADO in Redbridge?

Redbridge's LADO is Andy Mountfield. The LADO is based at Lynton House in Ilford town centre. Once an allegation is referred to the LADO, he will agree a course of action with the Designated Safeguarding Lead in the agency/setting/school, including informing parents/carers of the child concerned and whether and when the subject of the allegation should be informed. The LADO will discuss any related safeguarding issues, including the role of the staff member concerned and inform other relevant organisations/agencies including police if a criminal allegation has been made. If necessary, a formal Strategy Meeting will be held agreeing the way forward. The LADO then monitors all allegations until fully concluded which may include, no further action, disciplinary action, referral to regulatory body and/or referral to the [Disclosure Barring Service \(DBS\)](#).

## How can I find out more?

Guidance for managing allegations against staff or volunteers who work with children is outlined in [Chapter 7 of the London Child Protection Procedures and Practice Guidance](#) or view the [LSCB website](#).

# Contact Information

## Local Safeguarding Children Board (LSCB)

[LSCB@redbridge.gov.uk](mailto:LSCB@redbridge.gov.uk)

Tel: 020 8708 5282

Website: [www.redbridgelscb.org.uk](http://www.redbridgelscb.org.uk)

[@RedbridgeLSCB](https://twitter.com/RedbridgeLSCB)

LSCB Training

[LSCB.Training@redbridge.gov.uk](mailto:LSCB.Training@redbridge.gov.uk)

Requests, enquiries and feedback can be made using the on-line [Contact Form](#).

## Local Authority Designated Officer (LADO)

[LADO@redbridge.gov.uk](mailto:LADO@redbridge.gov.uk)

Tel: 020 8708 5350

Mobile: 07584 127461

## Child Protection Referrals

Tel: 020 8708 3885 (Office Hours)

Tel: 020 8708 5897 (Evenings and weekends)

[CPAT.Referrals@redbridge.gov.uk](mailto:CPAT.Referrals@redbridge.gov.uk)

## Child Death Overview Panel (CDOP) Notifications

[Nem-tr.CDOP@nhs.net](mailto:Nem-tr.CDOP@nhs.net)

Tel: 020 8708 5961



## Your views count!

We want your views on safeguarding issues that are important to YOU. Articles should be 200 – 300 words in length. We also welcome feedback, comments and suggestions for future content. Please contact Lesley Perry, LSCB Business Manager, via [LSCB@redbridge.gov.uk](mailto:LSCB@redbridge.gov.uk) or on 020 8708 5282 or 07814 883194. Our next edition – Spring 2017 – will be published at the end of April 2017.