



Redbridge Safeguarding Children  
Partnership

# Annual Scrutiny Report 2021-2022



## Contents

Introduction by Independent Chair	Page 3
Foreword by the Redbridge Statutory Safeguarding partners	Page 5
Child Safeguarding Multiagency Arrangements in Redbridge	Page 7
What we know about children in Redbridge: key needs data	Page 7
What children & young people have told us	Page 9
Learning from Reviews	Page 10
Evidence of Impact of the work of the RSCP	Page 10
Impact of work on priority areas	Page 14
Strategic Priorities for 2022-2023	Page 15
Independent Scrutiny	Page 16
Appendix 1: Budget	Page 21
Appendix 2: Membership of the RSCP	Page 22

## Introduction by Independent Chair & Scrutineer



The Redbridge Safeguarding Children Partnership (RSCP) annual scrutiny report is a mandatory requirement, directed by the [Children and Social Work Act 2017](#). The supporting guidance [Working Together to Safeguard Children: A guide to inter-agency working to safeguard and promote the welfare of children 2018](#), states that on an annual basis the safeguarding partners (the local authority, the police, and the Clinical Commissioning Group (CCG) (now NHS North East London (NEL) Integrated Care Board)), must publish a report to bring transparency for children, families and all practitioners about the activity undertaken by the partnership.

The report sets out what the partnership has achieved through its arrangements including the response to child safeguarding practice reviews, and how effective these arrangements have been in practice.

In September 2022, the national [Child Safeguarding Practice Review Panel](#) produced further [guidance](#) for safeguarding partners emphasising that the yearly reports should “*reflect and analyse how chairs and safeguarding partners demonstrate the leadership of local safeguarding partnerships, for example how strategic priorities are determined and how learning is disseminated*”.

The following report will outline the arrangements of the RSCP; the work it has undertaken over the period October 2021 – September 2022, and the impact of that work on practice, families, and children. This annual report will also include scrutiny of the safeguarding partnership arrangements by the Independent Chair of how effective the arrangements are using the Checklist for Independent Scrutiny 2022 produced by [The Association of Safeguarding Partners \(TASP\)](#).

The recent guidance compiled a series of questions to help safeguarding partners meet the requirements set out in [Working Together 2018](#) for producing a yearly report,

- What were your priorities for the last twelve months? How were these decided and by whom? What activities took place to take forward these priorities?
- What was the evidence base behind these activities and interventions?
- What was the impact of these activities on children, families, and professionals (from early help to looked after children and care leavers) and how was this measured?
- Where there has been little progress or things have not gone well, what lessons have been learnt?
- How has learning from activities (including from rapid reviews and local or national child safeguarding practice reviews) been used across the partnership?

- Have there been any resulting improvements from activities (including from rapid reviews and local or national child safeguarding practice reviews)?
- What independent scrutiny/scrutineer arrangements are in place and why have these been adopted? How successful have they been?
- What role has children and families' feedback had in your planning and activities?
- What training has taken place and how is the impact of training being measured (beyond the numbers of people attending)?

I have been the independent chair and scrutineer of the RSCP since March 2021 and provide the independent scrutiny of the effectiveness of multi-agency safeguarding arrangements as they operate in Redbridge based on direct observation, discussion, and review of minutes to answers as many of the questions above.

One of the key purposes of the annual report is to be transparent on the activity of the Partnership, with this in mind this Report will be sent to:

- all the safeguarding partners.
- the Redbridge Health and Wellbeing Board;
- the national Child Safeguarding Practice Review Panel and;
- the [What Works Centre for Children's Social Care \(WWCSC\)](#); and
- made publicly available on the RSCP and members' websites.

In conclusion, I would like to take this opportunity to register my thanks to colleagues for extending me a warm welcome, especially the Board Manager and team in supporting my induction into Redbridge.

Warmest regards



**Eileen Mills**

**Independent Chair & Scrutineer**

## Foreword by the Redbridge Statutory Safeguarding Partners

### Our Vision

*“Every member believes that every child and young person has the right to feel safe, secure, loved and well cared. We believe that this is essential to enable children to develop healthily, to learn and achieve, to acquire self-confidence and to reach their full potential. This will help them to grow up into well-adjusted adults. We are determined to secure this aim for every child and young person in Redbridge. We can only do this when safeguarding truly is everyone in Redbridge’s business.”*

The Council wants Redbridge to be a child friendly Borough and the safety and perception of safety of children and young people is crucial to being child friendly. Safeguarding arrangements within Redbridge are recognised as being strong but we know that there is no room for complacency.



Unfortunately, longstanding risks to the safety and wellbeing of children and young people continue and new risks emerge as our society changes. There is a strong multi-agency commitment to identifying and responding to risks to children and young people and as a system we are fortunate to have many experienced and committed practitioners across our organisations who are fully child focused in their day-to-day work.

I would like to thank Eileen Mills for a very productive first year in the crucial role of independent chair and scrutineer of our local multi agency safeguarding arrangements.

**Claire Symonds**

**Chief Executive, London Borough of Redbridge**

The Metropolitan Police is committed to working with partners to safeguard young people in East London. The work of the safeguarding board is crucial to improving the lives of children, especially those who are victims of crime and most vulnerable to exploitation and neglect. We will endeavour to do all we can to continue to make Redbridge a place for young people to feel safe and secure.



### **Stuart Bell**

#### **Basic Command Unit (BCU) Commander for the East Area, Metropolitan Police Service**

The welfare of children across the NHS North East London footprint including Redbridge, is paramount and NHS NEL remains committed to improving the outcomes and experiences of children.

NHS North East London (NEL) ICB works collaboratively with safeguarding partners in Redbridge at place and also across the seven other places across North East London.



The NEL footprint covers three Basic Command Units and seven Local Authorities which enables transformation and improvements to be introduced at place in Redbridge and at scale across North East London.

During the past twelve months we have worked collectively with our partners on our ambition to make North East London the best place to grow up, through early support when it is needed and the delivery of accessible and responsive services.

In the coming year as the partnership reflects on how best to respond to current national or local issues NHS NEL remains committed to providing leadership and positively influencing continuous improvements in safeguarding practice with safeguarding partners to support the on-going delivery of strategic objectives, key priority areas agreed by the safeguarding partnership.

### **Diane Jones**

#### **Accountable Officer, NHS North East London (formerly NEL Clinical Commissioning Group)**

# RSCP Arrangements

## Child Safeguarding Multiagency Arrangements in Redbridge

### Barking & Dagenham, Havering, and Redbridge (BHR) Safeguarding Partnership

The purpose of the Partnership is to work together at a strategic level to deliver system improvements across the Barking & Dagenham, Havering, and Redbridge (BHR) 'footprint' to support safeguarding children and young people. This will be undertaken through sharing of information and learning, provision of mutual support, themed work streams and quality assurance activities.

Since early 2022 the BHR Safeguarding Partnership no longer holds strategic responsibility of for safeguarding children. This now sits at a local borough level with the RSCP.

### The RSAB and RSCP Joint Executive

The Executive was established in this reporting period.

The role and responsibilities of the joint Executive Group is to provide multi-agency strategic leadership to the both the RSCP and RSAB, to ensure that agendas are aligned, are informed by horizon-scanning, and agree accountability for joint areas of priority. Ensuring the development and maintenance of strong links with other strategic boards, with a focus on joint working and a holistic approach to safeguarding. These include, but are not limited, to the Community Safety Partnership and the Health and Wellbeing Board.

### Redbridge Safeguarding Children Partnership

Redbridge Safeguarding Children Partnership meets at least four times a year, has a strategic focus, leading subgroups who report on a work plan for their area. A thematic approach is taken throughout the year with a focus on the priority areas.

### Learning and Improvement Subgroup

Oversees the development and delivery of the RSCP multiagency audit programme, responds to learning from reviews both local and national. Evaluating learning an improvement activity.

### Training Subgroup

Undertake training need analysis of multi-agency training needs. Develops, commissions, and evaluates the impact of multiagency training .

### Statement of Intent

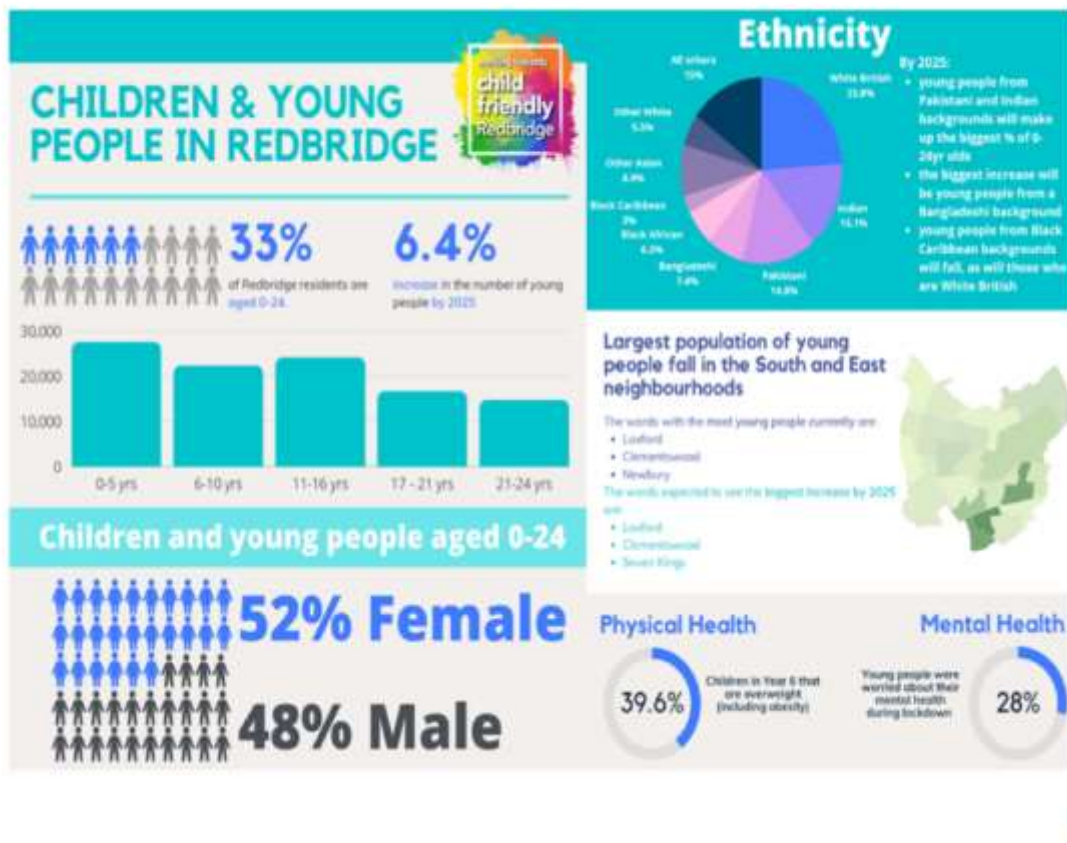
Redbridge SCP will work towards keeping children and young people in Redbridge safe from harm. We will support staff, families, and carers in achieving this aim.

Redbridge SCP will ensure relevant organisations in Redbridge co-operate to safeguard and promote the welfare of children.

Redbridge SCP will seek the views of children and young people for Redbridge to be a place where all children and young people feel safe and valued.

# What we know about children in Redbridge: key needs data

Information from [UNICEF Child Friendly Redbridge action plan](#) March 2022 identifies the following:



Data provided to the Redbridge Safeguarding Partnership in September 2022 showed at that point in time





## What Children & Young People have told us

Listening and responding to the views and voices of young people are a core thread throughout our Partnership.

The Redbridge Safeguarding Children Partnership is committed to hearing and responding to the voice and experiences of children and young people.

The Youth Council acts as a forum for young people to discuss their experiences and concerns regarding living in Redbridge. Representatives of the Youth Council shared with the RSCP their priority areas of work:

- ❖ preventing the normalisation of sexual harassment in schools
- ❖ ensuring students feel safe and comfortable to speak about experience of domestic violence (DV) and able to ask for guidance and support
- ❖ raising awareness and providing information about help and support with homelessness and arranging career choice workshops and promoting work shadowing
- ❖ highlighting the detrimental effect of substance misuse on youths (including working directly with Fusion, the young people's substance misuse service)
- ❖ Campaign against domestic violence and reach out to faith communities in raising awareness regarding domestic abuse and promoting services such as Refuge

The RSCP offer their full support to the youth council and plan to hear the outcomes of their work.

### Child Friendly Redbridge

The RSCP are supporting the progress to achieve UNICEF 'Child Friendly Redbridge' status, and the specific priorities of the Redbridge Youth Council relating to safeguarding including normalisation of sexual harassment in schools; signposting to provision of support for children impacted by domestic violence or homelessness; raising awareness of the effects of substance misuse on young people. The Board Manager, as a Child Friendly Programme 'champion' provides a link between the RSCP and the Child Friendly Redbridge Steering Group.



## Learning from Reviews

During 2021 - 2022 there were two referrals for the virtual panel to consider involving two children and young people.

From the two referrals, two Rapid Reviews were completed and submitted to the national CSPR Panel within statutory timeframes and findings accepted.

One CSPR has been commissioned and will be published on the RSCP website when completed.

## Evidence of Impact of the work of the RSCP

### Learning & Improvement Subgroup

The Subgroup continued to promote and embed learning in the safeguarding system, ensuring learning from national and local quality assurance activities, research and reports are fed into both single agency and multi-agency safeguarding training.

The Subgroup unfortunately due to lack of funding did not have the support of a dedicated RSCP Quality Assurance Manager, a role that had been in place previously, which means there is insufficient resource to develop and manage a full quality assurance programme. However, the Subgroup managed two key pieces of work.

The first part of the year saw a focus on a multi-agency Child Sexual Abuse (CSA) 'self-assessment' which was led by the Subgroup and the findings and learning presented to the Partnership in July 2021.

At the same time, it was acknowledged that an area in which the multi-agency partnership needed to develop and respond to was contextual safeguarding and concerns around criminal exploitation, including County Lines. Responding to the findings from the Child Criminal Exploitation (CCE) self-assessment presented to the Partnership in July 2021, and in line with the theme of the planned JTAI arrangements published by the inspectorates in March 2022, a child criminal exploitation (CCE) 'checklist' was developed for partners to assess themselves in areas such as awareness, training, policies, procedures etc.

This type of abuse was really brought to light at the June meeting when social workers from the Local Authority presented two cases where interventions had supported young people experiencing criminal exploitation. The actions and areas for development identified will be held up as a challenge by the Subgroup going forward for action in 2022 – 2023.

The Subgroup introduced a regular agenda item where examples of success could be share focusing on learning from good practice case examples. Over the year, it was positive to hear about individual case management good practice, how the voice of the child has informed both practice in individual cases and general policies and procedures, agencies being recognised within the public sector with awards, new services being implemented and positive feedback from inspections.

During the year, the Subgroup looked at case reviews held in other parts of the country, in particular a case from the East of England which featured adolescent suicide with a history of familial CSA. The Subgroup continued to share resources including the safeguarding bulletins produced by BHRUT and resources from The Association of Safeguarding Professionals (TASP) including working with the Roma community and tackled areas such as encouraging GPs to participate and engage with Child Protection (CP) Conferences.

The Subgroup received a presentation on the key findings from the National CSCR Panel report on Child Protection in England, the national review into the murders of Arthur Labinjo-Hughes and Star Hobson. This presentation provided a resource for attendees to take back and share across their own organisations. A specific piece of work arising from the learning from the Report was to develop a briefing for professionals on responding to malicious referrals, which is now published on the [RSCP website](#) and circulated as appropriate to practitioners and other practitioners.

## Training Subgroup

The RSCP Training Subgroup has met quarterly, and shared training put on in their individual organisations stemming from national guidance, theme and trends seen, local and national learning through CSCR, Rapid Reviews and Serious Incidents. The platform for training was within the limitations of being in and coming through the pandemic. There has been a movement from wholly online training/e-learning towards face-to-face training.

The Learning and Improvement (L&I) Subgroup feed into the Training subgroup and positive feedback was received on training provided on the RSCP training programme on the topic of Intrafamilial Child Sexual Abuse (CSA), one of the topics the L&I Subgroup looked at a multiagency audit. The London SCP Training Needs Analysis (TNA) on CSA in the familial environment was shared which highlighted the need to have this training within the RSCP training programme and members were asked to review their training on this area.

Considering the learning from [Child Q](#) Local Child Safeguarding Practice Review (City of Hackney SCP) “Adultification” is to be added to ‘Working with race, Culture and Beliefs in the Context of Professional Curiosity Course’. Other additions included Trauma Informed Practice and Professional Curiosity. The subgroup felt these topics are vital to better inform practitioners in their practice and thus improve better outcome for children, young people, and vulnerable adults.

The National Child Safeguarding Practice Review Panel Report on the [review](#) into the cases of Arthur Labinjo-Hughes and Star Hobson was discussed at the subgroup leading to development of a summary of the report being shared and a focus on learning around ‘malicious referrals’ and making sure referrals are not marked as such without good evidence to support it. It was highlighted to subgroup members it is a requirement that all anonymous or NSPCC referrals in Redbridge go through the Multi-Agency Safeguarding Hub (MASH).

New training courses added to the RSCP Training Programme 2022-23 include:

- Adolescent to parent briefing.
- Professional Curiosity in Practice
- Trauma Informed Safeguarding Briefing
- Working with Child & Adolescent Mental Health Training
- Cultural Barriers to Mental Health.
- Disrupting Child Exploitation
- Harmful Sexual Behaviours & the Brook Traffic Light Tool
- Children's Rights & Safeguarding

The **Amber Project Webinar** was launched which is an enhancement of the work already done with regards to raising awareness of child abuse linked to faith/belief.

The RSCP Multi-Agency Safeguarding Training Programme continues to be well attended despite the effects of the pandemic; from 620 in 2020-21 with 128 non-attendances to 645 in 2021-22 and only 176 non-attendances. The following table indicates the representation from each agency on the courses offered.

Agency	Number of attendees		Agency	Number of attendees	
	20/21	21/22		20/21	21/22
LBR Children and Families	297	222	CCG	0	3
LBR Education & Inclusion	59	65	NELFT	0	14
Schools & Colleges	98	188	BHRUT	0	2
Private Sector/Providers	56	27	Barts Health	1	2
Other LBR	1	8	Other Health	1	2
Voluntary Sector	102	65	Police	0	0
			Probation	0	1

Going forward action is required by partners to explore why their agency has no or low attendance at multiagency training, to developing strong partnership working it is essential agencies train together.

New training added to Training Subgroup members single agency training programmes include:

- Designated Safeguarding Leads (DSL) School - Sexual Harassment training, which features in Keeping Children Safe in Education (KCSIE) (2021) and Ofsted Inspections. This training was praised by one of the DSL who sits on the Training subgroup as very helpful to practice.
- NHS NEL has secured funding, for Aanchal Women's Aid to deliver the Iris Project, which is a programme on domestic abuse, to General Practitioners (GPs) across Redbridge. There will be allocated workers to help victims identified by GPs through increased screening and awareness of domestic abuse in primary care.
- BHRUT Learning disabilities (LD) training is now mandatory, either as e-learning at level 2 or face to face at level 3.

# Impact of work on Priority areas

In 2021- 2022 the RSCP identified three **priorities** carried over from 2020 - 2021:

<p style="text-align: center;"><b>Safeguarding vulnerable adolescents</b></p> <p style="text-align: center;"><b>Monitoring and supporting the multi-agency safeguarding response to the COVID-19 pandemic</b></p> <p style="text-align: center;"><b>Child sexual abuse in the family environment</b></p>
--

## **Safeguarding vulnerable adolescents**

- Identification of need - there is no pathway for vulnerable young adults where there have been significant safeguarding concerns due to risk of extra familial harm such as Child Criminal Exploitation, Child Sexual Exploitation, and gangs, referred to as contextual safeguarding; and a potential gap of support due to the young adults not being eligible for support under the **Care Act 2014**
- Development of a proposal for a panel to plan transitional support
- The panel will put the young person at the centre of planning

## **Monitoring and supporting the multi-agency safeguarding response to the COVID-19 pandemic**

- Partners shared pressures on services and business continuity plans
- Monitoring of the return to face-to-face working
- Identifying safeguarding patterns and trends
- Maintained a register of risks

## **Child sexual abuse in the family environment**

- Self-Assessment of Child Sexual Abuse (CSA) in the Family Environment undertaken and learning and recommendations identified
- Case audit of CSA undertaken and learning and themes from case audit shared
- Partner agencies provided assurance that CSA is included in the various safeguarding training courses provided for staff at different levels.
- Specific CSA/CSE Training Spotlight commissioned as part of the Redbridge CVS Training Programme
- CSA training facilitated by CSA Centre associate delivered, which was well evaluated and independently observed
- Achieving Best Evidence training taken place for social workers to support joint interview, of children who disclose CSA, with police and a social worker
- Agencies ensured that practitioners, managers, and staff involved in CSA cases are automatically provided with debriefing and supported to process secondary trauma, including referral to counselling where appropriate

## Strategic Priorities for 2022-2023

Priority Area	Action	Why this was chosen as a priority
<b>Transitional Safeguarding</b>	Completing the work begun in 2019/20 on transitional safeguarding – a joint project with the <a href="#">Redbridge Safeguarding Adults Board (RSAB)</a> to develop proposals for an effective Redbridge response to the needs of young adults at risk of exploitation, recognising that adolescence as a developmental phase does not suddenly end on the eighteenth birthday.	Building in on finding of Reviews ( <a href="#">RSCP Local CSPR Baby 'A'</a> ; <a href="#">RSAB Safeguarding Adults Review (SAR): 'Alice'</a> ) Voice of young people heard through the Redbridge Youth Council and the Redbridge Community Safety Partnership response to the <a href="#">Redbridge Crime Commission Report</a>
<b>Contextual Safeguarding</b>	Through a task and finish group with the Redbridge Community Safety Partnership, develop a joined-up multi-agency response and support to the exploitation of children.	National Learning London Safeguarding Adolescent peer review finding, Redbridge Crime Commission learning And CCE self-assessment against JTAI findings
<b>Responding to National Safeguarding Reviews and Reports</b>	Supporting the response and developments arising from the publication of the Independent Review of Children's Social Care, Final Report, May 2022; the Child Safeguarding Practice Review (CSPR) Panel Report – Child Protection in England: National Review into the murders of Arthur Labinjo-Hughes and Star Hobson, May 2022; and any future reports or directives published in 2022 – 2023.	Statutory requirement of Safeguarding Children Partnerships to respond to learning from reviews  In anticipation of changes recommended in the national <a href="#">CSPR Panel report Child Protection in England</a>
<b>Children &amp; Young Peoples Mental Health</b>	Supporting a response to the growth in children and young people's mental health, including raising awareness of different support and resources available.	Rapid Reviews and LCSPRs on adolescent suicides. Voice of children and young people. Findings of the RSCP COVID-19 Pandemic oversight Young people seeking help for their mental health
<b>Child Friendly Redbridge</b>	Supporting the progress to achieve UNICEF ' <a href="#">Child Friendly Redbridge</a> ' status, and the specific priorities of the Redbridge Youth Council relating to safeguarding including: normalisation of sexual harassment in schools; signposting to provision of support for children impacted by domestic violence or homelessness; raising awareness of the effects of substance misuse on young people.	Redbridge strategic priority

# Independent Scrutiny

This checklist is adapted from the description of Independent Scrutiny outlined in *Working Together to Safeguard Children 2018* and from 'Independent Scrutiny and Local Safeguarding Children Partnership Arrangements' (Pearce, Stratton, Parker & Thorpe, 2022), a national survey of what is being scrutinised, by who and how. It has also been developed from "The Six Steps for Independent Scrutiny" (Pearce, 2019) and informed by the work undertaken by The Association of Safeguarding Partners (TASP). This scrutiny report covers the period from October 2021 September 2022. The checklist identifies six areas that to scrutinise the overall work of a Local Safeguarding Children Partnership (LSCP). The purpose of the list that is to prompt discussion about who is scrutinising LSCP activity, the methods used for scrutiny and what is being scrutinised.

**Overall, the Safeguarding Children Arrangements are effective in Redbridge**

## KEY MEASURES OF SCRUTINY

- |   |  |
|---|--|
| 1. Redbridge SCP Leadership             | 4. Quality Assurance & Information Sharing           |
| 2. Engagement of Relevant Agencies      | 5. learning from Local & National Reviews & Research |
| 3. Outcomes for Children & Young People | 6. Multi-Agency Safeguarding Training &              |

## RAG RATING

Each question in each of the steps can be answered and graded as follows:

**Green:** positive that the question can be answered with evidence to illustrate this

**Amber:** acknowledgement that some parts of the question can be answered positively (with evidence to illustrate the positive response) but that there is still work to be done

**Red:** it is not possible to confirm that any part of the question can be answered with a positive response.

Any response (green, amber, or red) will still require an action plan to ensure reaching and maintaining desired outcomes.



1 Redbridge SCP Leadership				
	Key Line of Enquiry	Evidence	RAG rating	Actions required
1.1	The RSCP Partner Leads are clearly identified and accountable; are developing, reviewing and ensuring funding for strategic RSCP activity; and are identifying and publishing agreed desired outcomes for RSCP activity safeguarding children.	There is a Joint Executive Group for the key statutory partners from both the Redbridge Safeguarding Adults Board (RSAB) and the RSCP with published <i>Terms of Reference (ToR)</i> . The RSCP have agreed and published <i>annual priorities</i> . The statutory leads also work across the Barking & Dagenham, Havering, and Redbridge tri-borough 'footprint' through the BHR Safeguarding Partnership to delivery at a strategic level change and improvements across the local system.		<ol style="list-style-type: none"> <li>1. Approve budget and funding for 2023/24 post ICS changes including agreed arrangements for funding of CSPR</li> <li>2. Continue to pursue more equitable funding from MPS</li> <li>3. Continue to receive an annual independent scrutiny report</li> </ol>
1.2	Delegated representatives of the three lead partners are strategically placed on relevant partnership meetings, subgroups, and working groups.	Yes – identified from minutes of meetings.		
1.3	The three partner leads are working alongside other partnerships: safeguarding adult board; community safety partnership; health and wellbeing board.	The Executive includes RSAB and RSCP leadership. The HWBB receive the annual scrutiny report. The Chair of the RSAB and RSCP to attend CSP and representation from CSP at the RSAB and RSCP. Proposed implementation of the One panel to bring learning together from RSAB CSP and RSCP.		<ol style="list-style-type: none"> <li>1. Implement 'One Panel' approach</li> <li>2. Considers extending the Executive to include Chair of the CSP and the HWBB</li> <li>3. Review impact of new DA legislation on children safeguarding</li> </ol>
1.4	The three strategic leads are ensuring that necessary annual reporting is in place: with the RSCP annual report appropriately scrutinised. They are ensuring that a process is in place to review annual RSCP outcomes and for assessing forward planning procedures.	The Annual Scrutiny Report is completed by the Independent Scrutineer. Priority areas of work are reported on at every RSCP meeting.		<ol style="list-style-type: none"> <li>1. To continue the work on the multiagency data set to inform future priorities</li> <li>2. The work of the subgroups would be enhanced by the inclusion of the impact on children of the work</li> </ol>

2 Engagement of Relevant Agencies				
	Key Line of Enquiry	Evidence	RAG rating	Actions required
2.1	All relevant agencies within the RSCP are appropriately informed of, and engaged with, the safeguarding children partnership arrangements and RSCP priorities.	Yes - that can be seen in the attendance at meeting and subgroups and the raising of agenda items		<ol style="list-style-type: none"> <li>1. Review that the communication across all education settings is effective and allows opportunity for engagement in the RSCP activities</li> <li>2. Seek assurance re safeguarding arrangements for children missing school and those in elective home education</li> <li>3. Review that the communication across all CVS is effective and allows opportunity for engagement in the RSCP activities</li> </ol>
2.2	All safeguarding partners are engaged with identifying and reviewing RSCP priorities: communication channels are clear for safeguarding concerns to move up to and down from the three lead partners.	Yes – minutes of Partnership and Executive meetings. (Specific example outcomes of the Ofsted review of the front door)		<ol style="list-style-type: none"> <li>1. Introduce an action log for monitoring and oversight</li> <li>2. Audit use of the escalation policy</li> </ol>
2.3	All safeguarding partners are engaging with RSCP information sharing and staff training protocols.	Pan London Safeguarding Children procedures are in place and Redbridge is signed up to the <a href="#">London data sharing agreement (2021)</a> .		<ol style="list-style-type: none"> <li>1. Complete section 11 audit of all partner agencies</li> </ol>
2.4	The wider safeguarding children partnership is informed and updated with current findings from research and local and national reviews. They are informed of local and national guidelines regarding safeguarding children in and outside of the home environment.	The RSCP has a newsletter where updates both nationally and locally are shared. Regular presentation at the RSCP and Executive meetings for consideration of any local responses required.		<ol style="list-style-type: none"> <li>1. The RSCP receives the findings of the LBR children services review of Children who are Exploited services</li> </ol>

3. Outcomes for Children & Young People				
	Key Line of Enquiry	Evidence	RAG rating	Actions required
3.1	Children and Young People are consulted; and given opportunities to input into, and influence the development, implementation, and review of the RSCP desired outcomes for children	Youth council attend RSCP to introduce their priorities and update on their progress Information from the presentation inform to some degree the priorities		1. For 2023/4 develop a system to co-produce priorities with C&YP base
3.2	A communication system is in place (engagement strategy) to ensure that those impacted most by safeguarding concerns are aware of their right to be safeguarded and to play a part in developing initiatives to prevent, respond to, and report about safeguarding threats.	As above Redbridge YP take part in the annual youth voice audit identifying priorities for their safety. The RSCP is part of the UNICEF 'Child Friendly Redbridge'		1. Review the systems in place to communicate with YP
3.3	Opportunities are in place for Children and Young People to lead or co-lead safeguarding initiatives focused on improving outcomes for children, safeguarding training for adults and children; and attending relevant meetings, working groups, and subgroups.	C&YP lead and develop their own SG initiatives separate to the RSCP and present their work		1. Consider the role of CY&P in the training offer 2. Consider how C&YP voice is represented at subgroups and priority work groups
3.4	Young people play a role in assessing and representing desired outcomes during their transition to adult services.	Transition a priority area of work for the RSCP		1. Audit the impact of the Transitions work on children/adults

4. Quality Assurance & Information Sharing				
	Key Line of Enquiry	Evidence	RAG rating	Actions required
4.1	Mechanisms are in place for the three core partners to collect, analyse, and share relevant multi-agency data pertaining to safeguarding children.	Data set presented quarterly		1. Continue the work on the development of a wider partner data set to be analysed as a partnership 2. Develop exception report for the RSCP with areas of good practice and areas that need further scrutiny
4.2	Agencies from the wider partnership are undertaking and sharing their own single agency audits of data pertaining to safeguarding children.	The RSCP regularly receives report from agencies on the outcome of their single agency audits		1. To ask as part of Section 11 assurance that audit activity is taking place
4.3	Relevant data from the full RSCP is being used to review the impact of safeguarding initiatives on desired outcomes for children.	Limited at the present time		1. The develop of the data set needs to link to the priorities of the RSCP
4.4	Relevant data shared across the partnership is used to inform an assessment of gaps in data needed to identify priorities, and future safeguarding plans.	Remains in its infancy		1. As above

5 Learning from Local & National Reviews & Research				
	Key Line of Enquiry	Evidence	RAG rating	Actions required
5.1	The full RSCP are aware of the criteria and process for referral of serious incidents	Information is published on the <a href="#">RSCP website</a> .		1. Implementation of the 'One Panel'
5.2	Case reviews are adequately resourced to enhance learning, to embrace contextual as well as individual and family concerns and to involve the full range of strategic and operational staff to extract and embed learning.	CSPR are reviewed and commissioned as required		1. Funding as discussed in 1.1
5.3	Learning from local and national reviews is cascaded and used to improve outcomes for children, their families and community.	Evidence of training response to national and local reviews. Shared at RSCP		1. Implementation of the One panel to reach cross RSAB and CSP
5.4	Learning from case reviews is integrated into future RSCP training, policy, and practice.	Yes		

6. Multi-Agency Safeguarding Training & Workforce Development				
	Key Line of Enquiry	Evidence	RAG rating	Actions required
6.1	There is a transparent and clearly understood process for identifying, providing, and evaluating RSCP training needs with all safeguarding partners, including children, families, and communities.	Safeguarding Training Needs Analysis (TNA) is undertaken at a single agency and multi-agency level and reported via the Training Subgroup and is part of the current RSCP dataset.		
6.2	The planning and delivery of multi-agency training is informed by the local safeguarding children plan; review of local data; local and national policy; legislative contexts; and up to date research findings.	The annual RSCP Multi-Agency Training Programme is based on the TNA, learning from local and national reviews, research, feedback from service users and the RSCP priorities.		
6.3	The take up and use of RSCP training is reviewed in all RSCP agencies including take up and use of training by children, young people, and communities.	An annual report on the RSCP Training Programme is presented to the RSCP which includes attendance on the training and impact of learning.		
6.4	The three lead LSCP partners are assessing the impact of safeguarding children training on practice and using this to inform future LSCP training needs.	This can be evidence in quality assurance activities by single agencies and multi-agency quality assurance audits undertaken by the Learning & Improvement Subgroup and as part of the quality assurance work of the BHR Safeguarding Partnership.		

## Appendix 1

### Budget\*

Income		Expenditure	
Training attendance/non-attendance fees	25,000	TASP Membership	450
LB Redbridge	57,848	RSCP Training Programme	15,000
Metropolitan Police/MOPAC	5,000	RSCP Independent Chair	21,600
National Probation Service	1,100	RSCP Business Manager	41,013
NELFT	3,230	RSCP Training Manager	32,114
NEL Clinical Commissioning Group (CCG)	35,000	RSCP Senior Admin Officer	42,994
Barking, Havering & Redbridge University Hospitals NHS Trust (BHRUT)	3,231	Office expenses	500
Bart's Health NHS Trust	5,000	Rapid Review	4550
<b>Total Income</b>	<b>135,409</b>	<b>Total Expenditure</b>	<b>158,221</b>

\*The RSCP works across a financial year in terms of budget.

## Appendix 2

### Membership

Chief Executive Officer	London Borough of Redbridge (LBR)
Corporate Director of People	LBR
Operational Director, Children & Families	LBR
Operational Director, Education & Inclusion	LBR
Head of Safeguarding, Quality Assurance and PCFSW	LBR
Head of Child Protection, Early Intervention and Community Social Work Service	LBR
Head of Youth Justice and Targeted Positive Activities	LBR
Early Years and Childcare Improvement Team Manager	LBR
Director of Public Health	LBR
Operational Director, Housing	LBR
Head of Community Safety	LBR
Detective Superintendent Public Protection	East Area Basic Command Unit, Metropolitan Police Service
Director of Nursing	NHS North East London (NEL) Integrated Care Board (ICB)
Associate Director for Safeguarding Children	NHS NEL ICB
Designated Nurse Safeguarding Children	NHS NEL ICB
Designated Doctor for Safeguarding Children – (Barking & Dagenham, & Redbridge)/Designated Doctor for Child Death	NHS NEL ICB
Primary Care Nurse Consultant	NHS NEL ICB
Integrated Care Director	NELFT
Assistant Director Safeguarding and Named Midwife	BHRUT
Named Doctor of Safeguarding	Partnership of East London Cooperatives (PELC)
Think Family Lead	Bart's NHS Health Trust
Public Law Service Manager	CAFCASS
Head of Service – Redbridge & Waltham Forest	National Probation Service
Deputy Headteacher/Designated Safeguarding Lead	Barley Lane Primary School
Headteacher	Ilford County High School
Headteacher	Beal High School
Headteacher	St Peter & Paul Primary School
Headteacher	Apex Primary School
Acting Headteacher	Little Heath School
Designated Safeguarding Lead	New City College
Head of Community Development	RedbridgeCVS
Service Manager Redbridge VAWG	Refuge
Community Representative	Redbridge Faith Forum
Interim Lead Member for Children and Young People	LBR
Lay Members	Independent
Solicitor	LBR